



## **Cedar Mountain Solid Waste Fee Increase Summary**

### **-What areas does the WKCSSD service in which the fee increase will apply?**

- All **non-municipal**, county parcels between (and adjacent to) Hwy 9 and the Garfield/Kane County border, and from the Washington/Kane County border to the Paunsaugunt cliffs to the Glendale Bench road. (see attached map- page 2). This is what we refer to as the “Cedar Mountain area.”

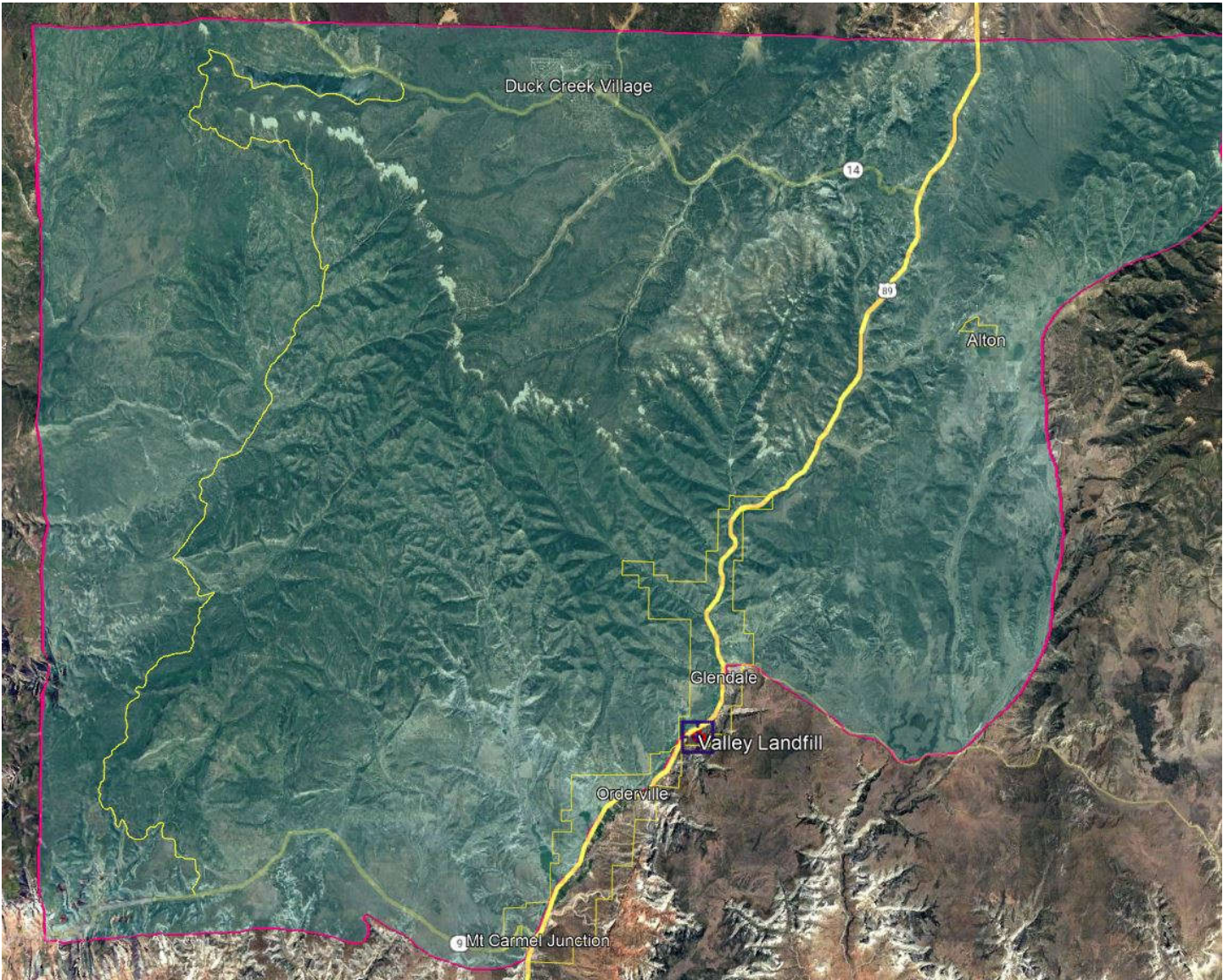
### **-What services does the WKCSSD provide for the property owners in the Cedar Mountain area?**

- The District provides dumpsters at approximately 16 different locations in the Cedar Mtn area that property owners may use to discard their personal (not business) waste. (See attached map with approximate locations – page 3).
- The District manages the Valley and Kanab landfills where all solid waste removed from Cedar Mtn is taken to and permanently stored as per Utah solid waste regulations.
- The District purchased land next to the Duck Creek Fire Station on which improvements were made to accommodate more residential use dumpsters and a “burn pit” constructed where property owners can safely dispose of tree limbs and slash to help mitigate fire concerns.

### **-Why the need for a fee increase?**

- Significant growth in all areas of the Cedar Mtn area in the past few years has created substantial increases in the volume of waste being deposited into the Valley landfill. The District has also had to increase the number of residential dumpsters it provides, the number of months we service them on the mountain, and the frequency of trips to empty the dumpsters.
- The Valley landfill is only approximately 35 acres in size and situated on a steep hill. There is no reasonable area for expansion at the current site and the District has been pursuing options for another landfill location in the valley area for many years with no success.
- At the current waste volume being deposited into the Valley landfill, it is anticipated to only last another 10-15 years before it will have to be closed permanently.
- It is estimated that the useful life of the Valley landfill can be extended to approximately 50 years if all the waste from the Cedar Mtn area were to be hauled to Kanab landfill.
- The District has determined it is in the best interest of all parties to not shorten the life of the Valley landfill and will begin hauling all Cedar Mtn residential waste to Kanab for permanent burial.
- The District estimates it will cost approximately \$285,000 per year to haul the Cedar Mtn waste to Kanab, and that it will incur initial capital expenditures of approximately \$412,000 to acquire the equipment and make the improvements necessary to begin this operation.
- The current fees charged to Cedar Mtn property owners were adjusted in 2018 to \$85 per lot with improvements and \$15 per lot without improvements. This was done in order to more equitably allocate a larger portion of the waste removal costs to the lots that, in general, generated the most waste. Prior to that, all lot owners were charged \$50 per lot regardless of improvements. That change reduced the total amount charged to all owners collectively by \$35,000 annually.
- The current fees have become insufficient to cover the costs of the expanded level of service the District has had to offer to keep up with the increased waste volumes the past 3 years. The District needs the additional revenue from the proposed fee increase to cover the costs associated with the increased waste volume and the costs associated with hauling waste to Kanab.

# WKCSSD "Cedar Mountain" Boundaries



# WKCSSD "Cedar Mountain" Boundaries With Dumpster Locations

